

WeatherMation LIVE

Historical Data

Version 2.0

28/04/2020



Envirodata Australia Pty Ltd

42-44 Percy Street Warwick

Queensland 4370 Australia

Phone: (07) 4661 4699

Fax: (07) 4661 2485

International Phone: +61 7 4661 4699

International Fax: +61 7 4661 2485

Email: sales@envirodata.com.au

<http://www.envirodata.com.au>

Material in this handbook is Copyright.

All rights reserved by the publishers.

No reproduction without the prior permission of the publishers.



Table of Contents

Introduction	2
1. Historical Data - Specific Menu Options	4
1. Historical Readings	5
2. Historical Data Screen Layout - Customize Historical Data Screen.....	9
3. Mobile Historical Data Screen Layout - Customize Current Readings Screen specifically for a Mobile Device	11

Introduction

Envirodata's WeatherMation software has been developed to download, display and respond to the weather data from your weather stations, automatically.

WeatherMation's Core Module, as you see in the WeatherMation LIVE Service, provides users all of your weather data from each of your connected weather stations. This data is on a Webpage to be accessed via the internet on any browser from a computer or mobile device.

Using the System

Go to www.weathermation.net.au

You will see the Login Page – please enter your User Name and Password that were provided to you.

You can click the “Remember Me” checkbox to remember your login details – this will mean in future; you are automatically logged into the system. Please note you will need to have cookies enabled in your browser for this to work.

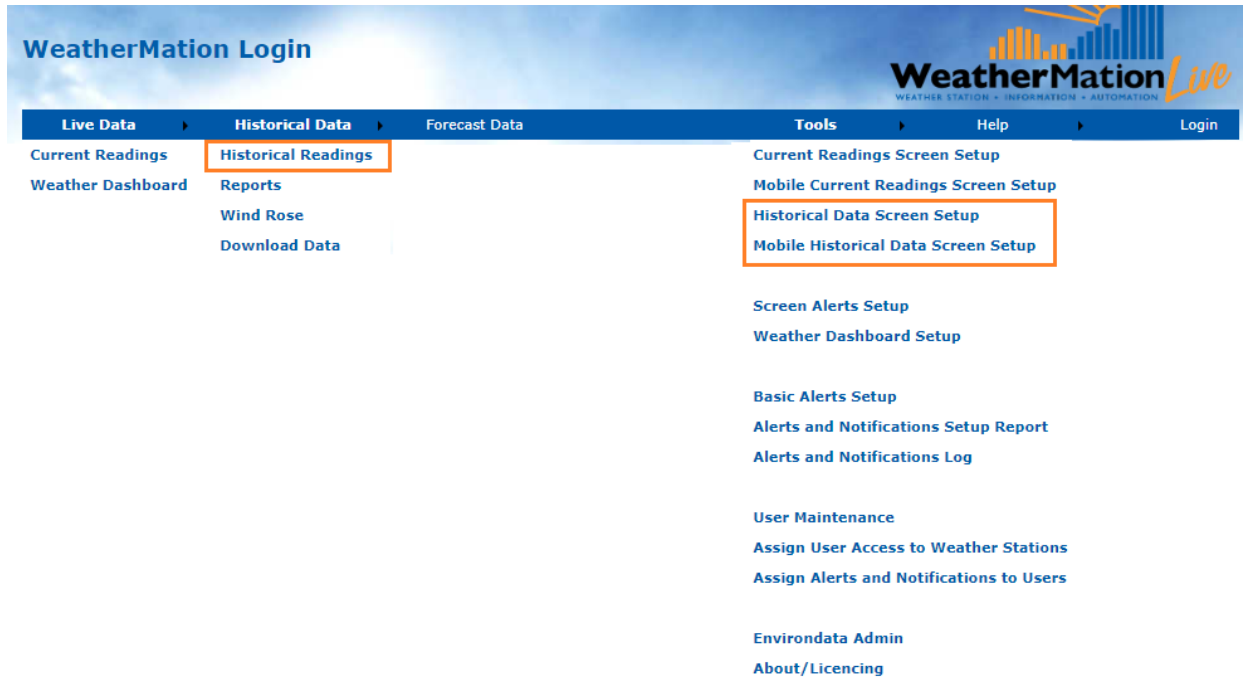
Click on the Login button to access the system

(If you need to change your password, click on the Reset Password button)

The screenshot shows the WeatherMation Login interface. At the top, there is a blue navigation bar with the title "WeatherMation Login" on the left and a logo on the right. The navigation bar contains several menu items: "Live Data", "Historical Data", "Forecast Data", "Tools", "Help", and "Login". Below the navigation bar, the login form is displayed. It includes two input fields for "User Name" and "Password", a "Remember Me" checkbox, and two buttons: "Login" and "Reset Password". The background of the page is a light blue sky with clouds. At the bottom left, there is a logo for "Envirodata" and some copyright information.

1. Historical Data - Specific Menu Options

- **Historical Data**
 - **Historical Readings** - displays historical weather data (memory data) from your weather station.
- **Tools**
 - **Historical Data Screen Setup** – customize your Historical Data Display page. This is ONLY available if you have configuration permission.
 - **Mobile Historical Data Screen Setup** – customize your MOBILE Historical Data Display page. This is ONLY available if you have configuration permission.



1. *Historical Readings*

'Historical Readings' displays the historical weather data from your chosen weather station that has been downloaded into the WeatherMation Database.

The date & time stamp for each record is for the **END** of the memory period.

E.g.

- Hourly Data with the date & time stamp of 20/02/2015 16:00 is data recorded from 15:00 to 16:00 on the 20/02/2015.
- Daily data with the date & time stamp of 20/02/2015 09:00 is the 24 hours from 19/02/2015 9:01 to 20/02/2015 09:00, which is a standard meteorological recording period. Hence the minimum Air Temperature value in the 20/02/2015 Daily Summary is normally for the morning of the date (20/02/2015) and maximum Air Temperature is normally from the afternoon of the day before (19/02/2015 in our example).

Using the Historical Readings Page

If you have more than one weather station linked to this software, you can select which weather station's data to display by clicking the arrow on the drop-down box and selecting a new weather station.

You can select what historical data to display by clicking the arrow on the drop-down box and selecting a different memory. E.g. Daily Summary is the default, but you can select Hourly Data or 10-Minute Data or 5-Minute Data etc (The options available depend on each of your weather stations' programs).

The data displayed is the LATEST record downloaded from the weather station for the particular memory. Please note the date/time on the right side.

In order to see the graphs below the data, you have to click on any sensor. This graph will then display a history of records for the selected Memory values for the selected sensor.

Historical Data Daily Summary




Live Data | Historical Data | Forecast Data | Tools | Help | Logout





Weather Station: Stanthorpe Big Thermometer
Memory: Daily Summary

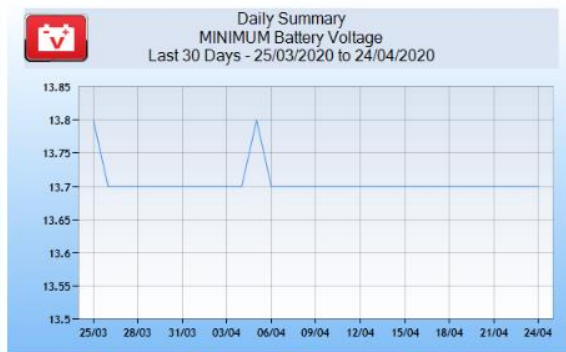
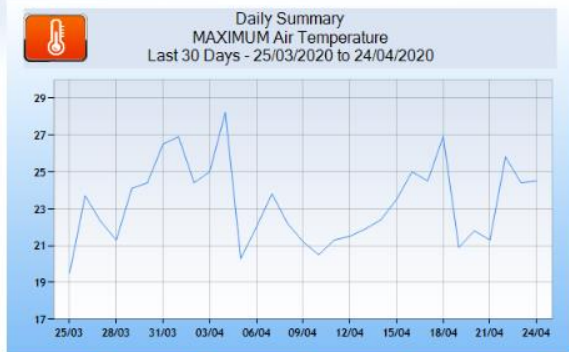
User: Jolinda Murray

Updated on: 24/04/2020 9:00:00 AM

The values in the Daily Summary represent the 24 hours up to 9am on the date of the record

Sensor	Value	Unit
 MAXIMUM Air Temperature	24.5	DegC
 MINIMUM Air Temperature	6.8	DegC
 AVERAGE Air Temperature	14.7	DegC

Sensor	Value	Unit
 MINIMUM Battery Voltage	13.7	V
 TOTAL Communications	1440	mins
 MAXIMUM Rain Gauge	0	mm
 TOTAL Rain Gauge	0	mm



Last 30 Days | Last 3 Months | Last 6 Months | Last 12 Months | Download Graph Data

Last 30 Days | Last 3 Months | Last 6 Months | Last 12 Months | Download Graph Data

To download a custom data set, click to go to Historical Data / Download Data

Using the Graph Data – note the buttons is dependent on the Memory selected

For Daily Summary:

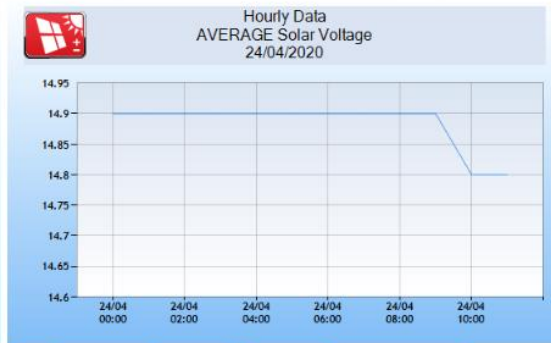
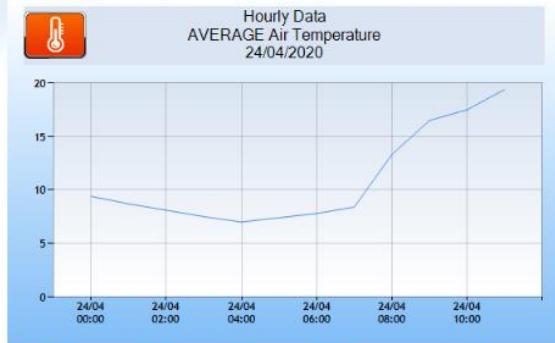
- Last 30 Days – Displays the Last 30-day's data of Daily Summary Records
- Last 3 Months - Displays the Last 3-months' data of Daily Summary Records
- Last 6 Months – Displays the Last 6-month's data of Daily Summary Records
- Last 12 Months – Displays the Last 12-month's data of Daily Summary Records
- Download Graph Data – will download into a .csv file only the data displayed on the graph currently.

Weather Station: Stanthorpe Big Thermometer
 Memory: Hourly Data

User: Jolinda Murray
 Updated on: 24/04/2020 11:00:00 AM
 The values in the Hourly Data represent the 60 minutes up to the time of the record

Sensor	Value	Unit
AVERAGE Air Temperature	19.4	DegC
MINIMUM Battery Voltage	13.8	v
AVERAGE Load Current	63.6	mA

Sensor	Value	Unit
AVERAGE Solar Voltage	14.8	v
AVERAGE Charge Current	61	mA
TOTAL Rain Gauge	0	mm
CURRENT Rain Since 9am	0	mm



Today | Last 12 Hours | Last 7 Days | Last 30 Days | Download Graph Data

To download a custom data set, click to go to Historical Data / Download Data

Using the Graph Data – note the buttons is dependent on the Memory selected For Hourly Data:

- Today - Displays the data since midnight of Hourly Data Records
- Last 12 Hours - Displays the Last 12-hours’s data of Hourly Data Records
- Last 7 Days - Displays the Last 7-days’s data of Hourly Data Records
- Last 30 Days – Displays the Last 30-Day’s data of Hourly Data Records
- Download Graph Data – will download into a .csv file only the data displayed on the graph currently.

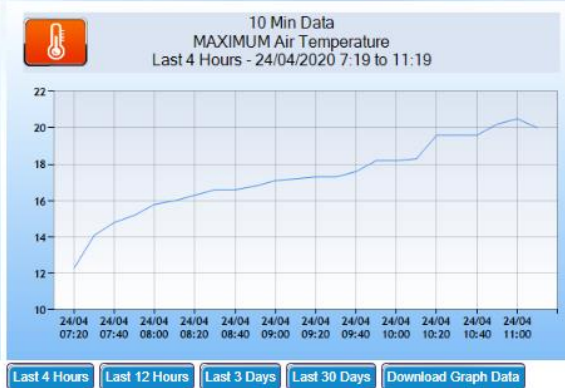
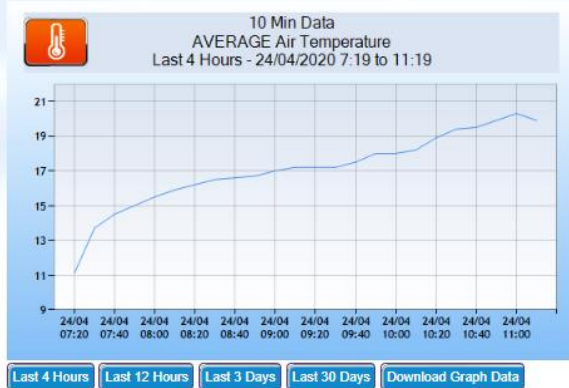
Weather Station: Stanthorpe Big Thermometer
 Memory: 10 Min Data

User: Jolinda Murray

Updated on: 24/04/2020 11:20:00 AM

The values in the 10 Min Data represent the 10 minutes up to the time of the record

Sensor	Value	Unit
AVERAGE Air Temperature	19.7	DegC
TOTAL Rain Gauge	0	mm
MAXIMUM Air Temperature	20.1	DegC
MINIMUM Air Temperature	19.6	DegC



Last 4 Hours | Last 12 Hours | Last 3 Days | Last 30 Days | Download Graph Data

Last 4 Hours | Last 12 Hours | Last 3 Days | Last 30 Days | Download Graph Data

To download a custom data set, click to go to Historical Data / Download Data

**Using the Graph Data – note the buttons is dependent on the Memory selected
 For 1-, 5-, 10- or 15-Minute Data:**

- Last 4 Hours - Displays the Last 4-hours’s data of Data Records
- Last 12 Hours - Displays the Last 12-hours’s data of Data Records
- Last 3 Days - Displays the Last 3-days’s data of Data Records
- Last 30 Days – Displays the Last 30-Day’s data of Data Records
- Download Graph Data – will download into a .csv file only the data displayed on the graph currently.

2. Historical Data Screen Layout - Customize Historical Data Screen

The Customize Historical Data Screen allows you to setup which sensors from your weather station you would like to be displayed on the Main Historical Readings Screen. You can also select in which order they will appear and what type of graph you would like for them. *Only a user assigned layout setup access will be able to make these changes.*

NOTE – It is NOT necessary to do this customization. If nothing is setup here, it will display ALL your data on the Historical Readings page – this will just be displayed in 2 columns.

Using the Customize Historical Data Page

If you have more than 1 weather station linked to this software, you can select which weather station's data to display by clicking the arrow on the drop-down box and selecting your chosen weather station.

- ALL sensors that are AVAILABLE to be displayed are on the LEFT side of the selection screen
- All Sensors and the order in which they are displayed selected for display on the LEFT side of your Historical Readings Screen are shown in the MIDDLE Table
- All Sensors and the order in which they are displayed selected for display on the RIGHT side of your Historical Readings Screen are shown in the RIGHT Table

To add a Sensor from the custom display:

Click on the sensor's **Left** > button for it to be displayed on the LEFT side or
Click on the sensor's **Right** > button for it to be displayed on the RIGHT side

To remove a Sensor from the custom display:

Click on the sensor on the MIDDLE or RIGHT-side tables and click on the x button

To change the order in which sensors are displayed

Click on the sensor on the MIDDLE or RIGHT-side tables and click on the UP or DOWN arrow buttons

To setup the Type of Graph

Click on the sensor on the MIDDLE or RIGHT-side tables and select your preferred graph type from the dropdown box in the top right corner.

Available Types:

- Line or Bar for most sensors.
- Wind Direction has an added option for Compass.

Station Notes for Historical Readings Screens

This is a text field where you can enter any message.

This message will be displayed on your Current Readings and Mobile Current Readings pages.

This message is also displayed on the Historical Data and Mobile Historical Data pages.

After you have typed in your message, click the Save button just below it.

To setup the Type of Graph of Historical Reading Records

From the drop-down box, you can select if you want to have a Line or a Bar graph – for Wind Direction Sensors, there is an additional Compass type you can select to display the Wind Compass.

Historical Data Hourly Data

Weather Station: Office Parkes
Memory: Hourly Data
Station Notes:
Graph Type:
Save

User: Administrator

Sensors Available to Display			
Sensor	Code		
MAXIMUM Wind Speed 10m	WS45	Left >	Right >
AVERAGE Wind Speed 10m	WS45	Left >	Right >
STDEV Wind Speed 10m	WS45	Left >	Right >
AVERAGE Wind Direction 10m	WD45	Left >	Right >
S-THETA Wind Direction 10m	WD45	Left >	Right >
MAXIMUM Peak Wind Gust	PWG	Left >	Right >
AVERAGE Relative Humidity	RH40	Left >	Right >
AVERAGE Air Temperature	TA40	Left >	Right >
TOTAL Rain Gauge	RG12	Left >	Right >
AVERAGE Solar Radiation	SR41	Left >	Right >
AVERAGE Barometric Pressure	BP10	Left >	Right >

Sensors Displayed Left			
Sensor	Code	Graph	# to Display
MAXIMUM Wind Speed 10m	WS45	Line	30
MAXIMUM Peak Wind Gust	PWG	Line	30
AVERAGE Relative Humidity	RH40	Line	30

Sensors Displayed Right			
Sensor	Code	Graph	# to Display
AVERAGE Air Temperature	TA40	Line	30
TOTAL Rain Gauge	RG12	Line	30
AVERAGE Solar Radiation	SR41	Line	30

3. Mobile Historical Data Screen Layout - Customize Current Readings Screen specifically for a Mobile Device

The Customize Mobile Display Screen allows you to setup which sensors from your weather station you would like to be displayed on a Mobile Device Historical Readings Screen. You can also select in which order they will appear and what type of graph you'd like for them. *Only a user assigned layout setup access will be able to make these changes.*

NOTE – It is NOT necessary to do this customization. If nothing is setup here, it will display ALL your data on the Historical Readings page – this will just be displayed in 1 long column to scroll.

Using the Customize Mobile Display Page

If you have more than 1 weather station linked to this software, you can select which weather station's data to display by clicking the arrow on the drop-down box and selecting your chosen weather station.

- ALL sensors that are AVAILABLE to be displayed are on the LEFT side of the selection screen
- All Sensors and the order in which they are displayed selected for display on the Mobile Historical Readings Screen are shown in the RIGHT Table

To add a Sensor from the custom display:

Click on the sensor's **Select >** button for it to be displayed

To remove a Sensor from the custom display:

Click on the sensor on the RIGHT-side tables and click on the x button

To change the order in which sensors are displayed

Click on the sensor on the RIGHT-side tables and click on the UP or DOWN arrow buttons

Station Notes for Historical Readings Screens

This is a text field where you can enter any message.

This message will be displayed on your Current Readings and Mobile Current Readings pages.

This message is also displayed on the Historical Data and Mobile Historical Data pages.

After you have typed in your message, click the Save button just below it.

To setup the Type of Graph of Historical Reading Records

From the drop-down box, you can select if you want to have a Line or a Bar graph – for Wind Direction Sensors, there is an additional Compass type you can select to display the Wind Compass.

Customize Mobile Historical Data Display

User: Administrator












Weather Station:

Memory:





Station Notes:

Graph Type:

Sensors Available to Display

Sensor	Code	
 MAXIMUM Wind Speed 10m	WS45	<input type="button" value="Select >"/>
 AVERAGE Wind Speed 10m	WS45	<input type="button" value="Select >"/>
 STDEV Wind Speed 10m	WS45	<input type="button" value="Select >"/>
 AVERAGE Wind Direction 10m	WD45	<input type="button" value="Select >"/>
 S-THETA Wind Direction 10m	WD45	<input type="button" value="Select >"/>
 MAXIMUM Peak Wind Gust	PWG	<input type="button" value="Select >"/>
 VWSP Inst. Wind Speed		<input type="button" value="Select >"/>
 VWDIR Inst. Wind Direction		<input type="button" value="Select >"/>
 MAXIMUM Relative Humidity	RH40	<input type="button" value="Select >"/>
 MINIMUM Relative Humidity	RH40	<input type="button" value="Select >"/>
 AVERAGE Relative Humidity	RH40	<input type="button" value="Select >"/>
 MAXIMUM Air Temperature	TA40	<input type="button" value="Select >"/>

Sensors Displayed on Mobile Screen

Sensor	Code	Graph	# to Display	
 MAXIMUM Air Temperature	TA40	Bar	30	<input type="button" value="Up"/> <input type="button" value="Down"/> <input type="button" value="X"/>
 MINIMUM Air Temperature	TA40	Line	30	<input type="button" value="Up"/> <input type="button" value="Down"/> <input type="button" value="X"/>
 TOTAL Rain Gauge	RG12	Bar	30	<input type="button" value="Up"/> <input type="button" value="Down"/> <input type="button" value="X"/>
 TOTAL Evaporation Total	EV30	Line	30	<input type="button" value="Up"/> <input type="button" value="Down"/> <input type="button" value="X"/>